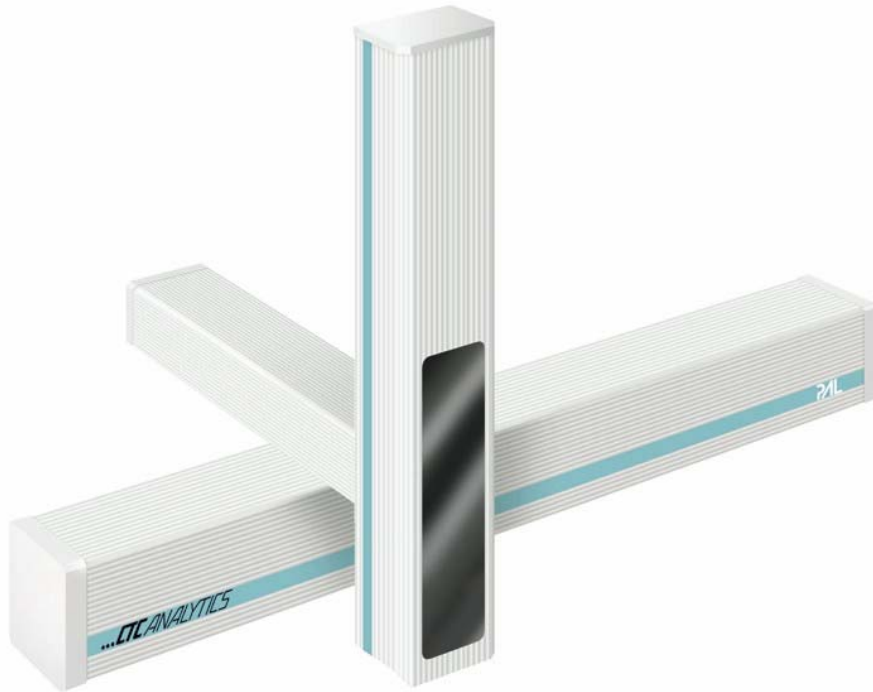


HTX PAL

(120 cm X-Rail)



- **More deck space for up to 14 microwell plates without using stacks for faster access**
- **Expanded X-rail accommodates more of your accessories**
- **Use with valves, incubator, up to 4 stacks**
- **Straddle two GCs for more versatility and higher throughput**

HTX PAL Specs

- Can be configured as Twin PAL
- Can be delivered with an optional 2 Injection Head
- Compatible with all PAL Accessories
- LEAP Shell for integration with Analyst™ and Flux Rheos 2000 with splitter and mass flow monitor

